

## Unlimited Connectivity

### Connections to Fieldbus Systems



#### Fieldbus Modules

##### Customer benefits

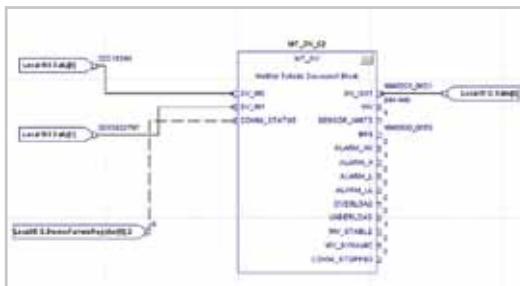
- Direct. Easily connects weighing sensors to Profibus DP, Profinet IO, DeviceNet or EtherNet/IP – with minimal programming effort.
- Flexible. Networks most METTLER TOLEDO products: weighing modules, laboratory and industrial
- Auto-detection of interface parameters and DIN-rail mountable module for fast commissioning
- Easy transfer of most frequent commands in BASIC MODE
- Full flexibility in EXTENDED MODE

# Fast and Convenient Integration of Weigh Modules Into Most Common PLC



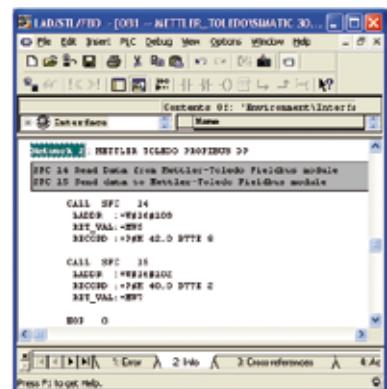
## Rockwell Automation Logix5000

As of RSLogix5000 Version 16, a complimentary open-source Rockwell Automation Logix5000 function block and faceplates specific to METTLER TOLEDO products with SICS communication protocol will be available. They will significantly shorten integration time and save valuable resources and development time for system integrators and end users.



## Siemens STEP 7

METTER TOLEDO offers the user of Profibus and ProfiNet IO modules an example for Siemens Step 7. Engineering notes explain the configuration to ensure a fast start and correct integration.



## SIWAREX FTA

As an alternative to Fieldbus the weigh modules WM, WMS and WMH can directly be connected to the SIWAREX FTA module. Siemens and METTLER TOLEDO commonly certified communication between these weigh modules and the SIWAREX FTA within the "Totally Integrated Automation" program.

## Technical Data Fieldbus Modules



<b>Part number</b>	42 102 809	42 102 859	42 102 810	42 102 860
<b>Interface</b>	Profibus DP slave (DPVO) according to EN 50170	Profinet IO slave according to IEC 61784 (CPF-3/3)	DeviceNet adapter according to EN 50325-2	Ethernet/IP adapter according to EN 50325-2
<b>Baud rate</b>	9.6 kbit/s – 12 Mbit/s	100 Mbit/s	125, 250 or 500 kbit/s	10/100 Mbit/s DHCP
<b>Address range</b>	0–99	Full IP address range, DHCP	MAC ID 0-63	Full IP address range,
<b>Connector</b>	SUB D9 female	RJ-45	Terminal block with 5 connectors	RJ-45
	Scale: SUB D9 female Power: Terminal block with 2 connectors			
<b>Subnet connection</b>	RS232, RS422, and RS485, up to 57.6 kbit/s			
<b>Housing</b>	Plastic housing with snap-on connection to DIN-Rail			
<b>Dimensions</b>	120 mm x 75 mm x 27 mm / 4.7 in x 2.0 in x 1.1 in			
<b>Mounting</b>	DIN rail			
<b>Power supply</b>	24 V DC $\pm$ 10% / typically 100 mA			
<b>Protection</b>	IP 20			
<b>Temperature</b>	+5 °C to +55 °C / 41 to 131 degrees Fahrenheit			
<b>Relative humidity</b>	The product is designed for a relative humidity of 0 to 95 %, non-condensing			
<b>Weight value</b>	Single floating point number according to IEEE 754 (Motorola word)			
<b>Included in delivery</b>	Module, including configuration software, configuration cable, detailed instruction and installation manual			
<b>Compatibility</b>	Automated precision weighing modules: WX, WM, and WMH All METTLER TOLEDO MT-SICS-compatible scales			
<b>CE mark</b>	Certified according to European standards unless otherwise stated.			
<b>Emission</b>	According to EN 50081-2:1993			
<b>Immunity</b>	According to EN 61000-6-2:1999			
<b>UL/c-UL compliance</b>	The units are open type listed by the Underwriters Laboratories. The certificate is valid when the unit is installed in a switch cabinet or equivalent. The certification has been documented by UL in file E214107.			

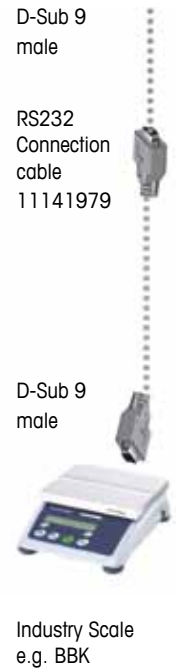
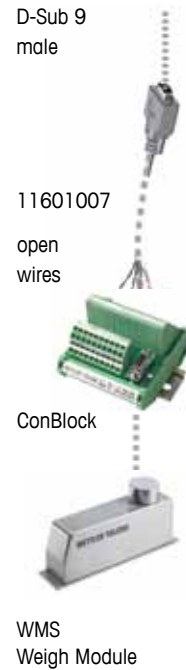
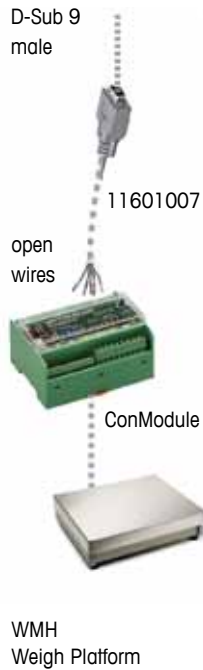
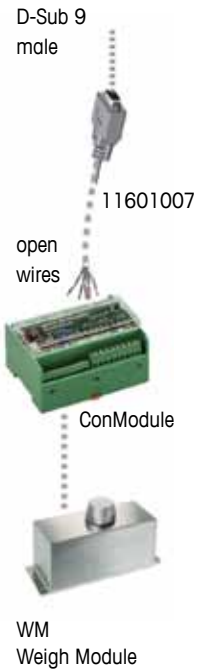
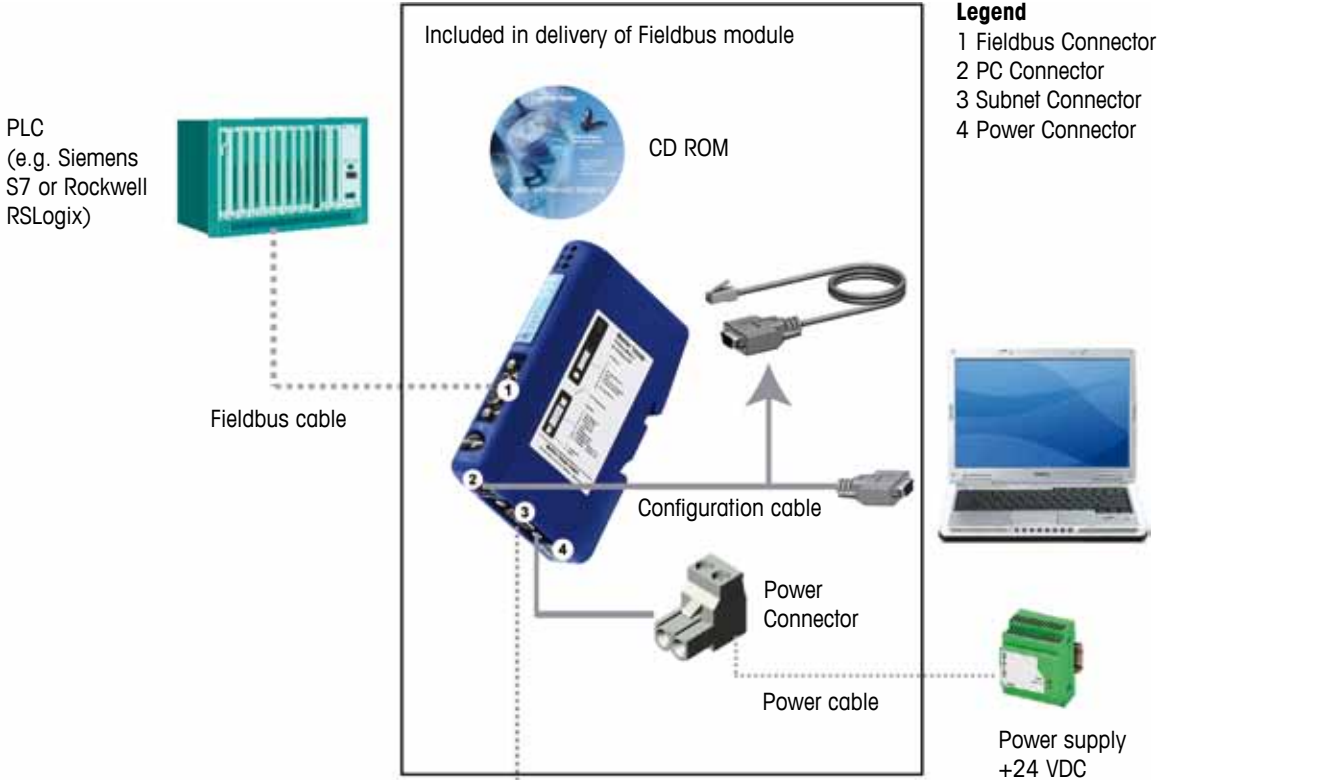
## Order Information

Model	Item number
Profibus DP Module	42 102 809
Profinet IO Module	42 120 859
DeviceNet Module	42 102 810
EtherNet/IP Module	42 102 860
D-Sub 9 male – open leads, 1 m	11 141 979
D-Sub 9 male – male, 1.8 m	11 601 007

## Scope of delivery

- Fieldbus module
- Configuration cable
- CD-ROM, including configuration software, detailed instruction and installation manual

# Configuration overview



**Mettler-Toledo AG**  
 Laboratory & Weighing Technologies  
 CH-8606 Greifensee, Switzerland  
 Tel. +41 44 944 22 11  
 Fax +41 44 944 30 60

[www.mt.com](http://www.mt.com)

For more information

Subject to technical changes  
 © 02/2010 Mettler-Toledo AG  
 MarCom Industrial