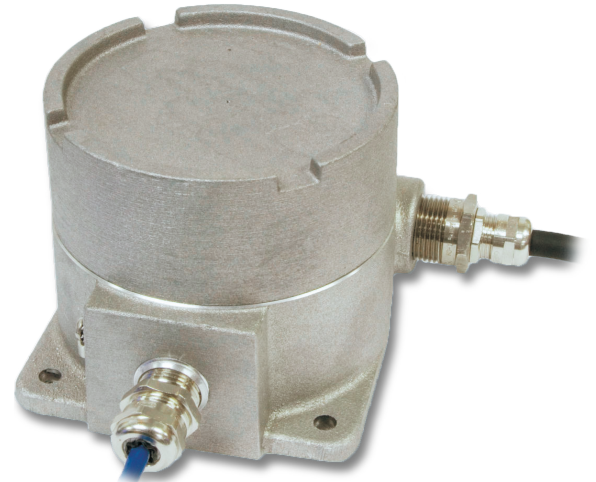


Intrinsically safe power for the IND226x Terminal



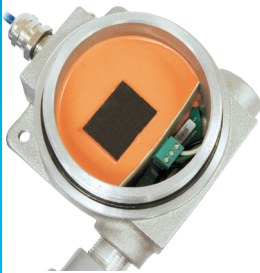
Global approvals support local compliance

Intrinsic safety guaranteed through compliance with globally recognized standards and directives. Supports compliance to applicable regulations in your region of the world.



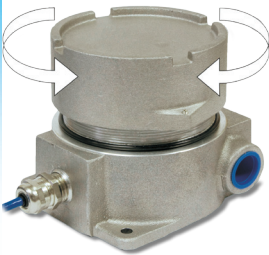
Tamper-proof design

protects integrity of critical components and prevents installation safety from being compromised.



Continuous operation

120 V and 240 V versions can be installed directly into most Division 1, Zone 1 and Zone 21 areas, providing continuous AC power to your operation.



APS500 and APS501 Power Supplies

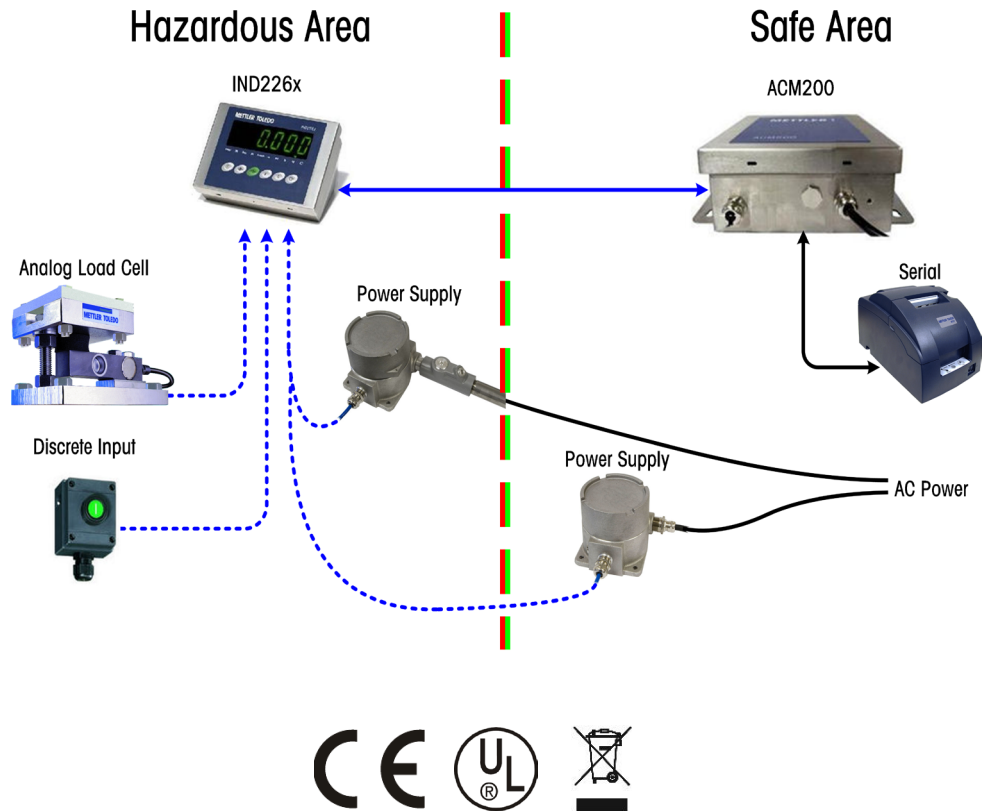
The APS500 and APS501 provide intrinsically safe power to an IND226x installed in a hazardous area, making expensive barriers or additional protection unnecessary. Featuring a tamper-proof design and integral mounting brackets, these power options enhance the flexibility of the IND226x hazardous area solution.

Technical data

Safe power for the IND226x APS500 and APS501 Intrinsically Safe Power Supplies

Features and Benefits

- Available in both 120 VAC (APS500) and 240 VAC (APS501) models
- Allows for installation of an AC power source in many Division 1, Zone 1 and Zone 21 classified hazardous areas, without the need for costly barriers or additional protections
- A continuous power supply eliminates the need to replace and charge batteries commonly used in hazardous areas
- Tamper-proof assembly utilizes encapsulation to protect ongoing safety of installation
- Power supplies include assembled cable for connection to the terminal, and integral mounting tabs, making installation more efficient



Enclosure Dimensions (L x W x H)	170 x 120 x 110 mm (6.7 x 4.7 x 4.3 in.)
Shipping weight	3.2 kg (7.1 lbs) approximate gross weight
Enclosure construction/ environmental protection	Copper-free aluminum casing with nickel plated fittings Explosion rated Type 4x and IP66 protection
Operating environment	-10°C to 40°C (14°F to 104°F) at 10% to 95% relative humidity, non-condensing
Input power	APS500: Operates from 85 to 132 VAC, 49-61 Hz @ 200mA APS501: Operates from 168 to 250 VAC, 49-61 Hz @ 100mA
Output power	Output voltage: 10 VDC up to 485 mA continuous current
Connectivity to terminal	3 m. (10 ft.) integral cable included Possible extension to 48m (157 ft.) maximum
Agency Approvals: US	Explosion-proof for installation INSIDE Class I, Division 1, Groups B, C, D T6, Ta = 40°C * Not suitable for installation inside Group A area Dust ignition-proof for installation INSIDE Class II, Division 1, Groups E, F, G; Class III T6; Ta = 40°C, IP66 Intrinsically safe connection from safe area INTO Class I, Division 1, Groups A, B, C, D; Class II, Division 1, Groups E, F, G; Class III
Europe	Approved as a category 2 device for use in a safe area or in Zone 1 and Zone 21, IIC classified areas II 2 G Ex emb [ib] IIC T5 (Gas) II 2 D Ex tD A21 IP66 T64°C (Dust)
Canada	Explosion-proof for installation INSIDE Class I, Division 1, Groups B, C, D T6, Ta = 40°C * Not suitable for installation inside Group A area Dust ignition-proof for installation INSIDE Class II, Division 1, Groups E, F, G; Class III T6; Ta = 40°C, IP66 Intrinsically safe connection from safe area INTO Class I, Division 1, Groups A, B, C, D; Class II, Division 1, Groups E, F, G; Class III
Part numbers	APS500: 64056319 APS501: 64058025



Quality certificate ISO9001
Environment certificate ISO14001
Internet: <http://www.mt.com>
Worldwide service

Subject to technical changes
INDB0044.1E
©12/2010 Mettler-Toledo, Inc.

ServiceXXL

Tailored Services

Essential Services for Dependable Performance

METTLER TOLEDO is uniquely qualified to provide the installation, calibration and maintenance services essential to ensuring accuracy, optimizing uptime and prolonging equipment life. Our service representatives will be there at the right time, with the right parts, the right tools and the right skills to meet your needs.

www.mt.com
for more information