

Micropipette Calibration At High Speed



Rapid and ergonomic

The integrated light barrier for hands-free operation of the calibration device guarantees optimal ergonomics: The door rapidly opens automatically as soon as a pipette passes through the light barrier. The pipette calibration device XP26PC is suitable for use from the right as well as the left hand side.



Calibrate without interruption

The large container volume of the integrated evaporation trap is capable of collecting 10 ml of liquid. This means e.g. that 10 µl can be pipetted 1000 times before emptying the container. Your profit: faster calibration without interruption.



Accuracy guaranteed

The calibration kit, which includes a 1 g OIML-certified weight, special weighing pan and a pair of tweezers, allows you to regularly test your balance with an external weight, simply and easily.



For smallest pipette volumes $\geq 1 \mu\text{l}$

With a readability of 1 µg, the XP26PC fulfils the calibration requirements of ISO8655 for micropipettes (volume $\geq 1 \mu\text{l}$). Unprecedented measurement performance is assured also for smallest pipette volumes.



Excellence Plus XP26PC

High-speed System for Pipette Calibration

The XP26PC is a sophisticated, high-speed solution for the calibration of your single channel pipettes. With a capacity of 22 g and a readability of 1 µg, it fulfils ISO8655 requirements for micropipettes down to a volume of 1 µl. Operating efficiency is guaranteed by the light barrier which allows hands-free opening of the lid. The built-in evaporation trap avoids errors caused by evaporation of the test liquid during weighing. System speed and throughput is further increased by the presence of a large waste container allowing for continuous pipetting without interruptions.

The result: Pipette calibration using the XP26PC is up to 3x faster and more accurate compared to a conventional balance.

Technical data

Excellence Plus XP26PC

High-speed System for Pipette Calibration

Standard equipment

- Removable light barrier for right or left hand use
- Easily dismantled evaporation trap, with a 10 ml container
- Single-channel pump
- Calibration kit (including 1 g OIML-certified weight, a pair of tweezers, special weighing pan and certificate)
- LevelControl warns you when the balance is not leveled
- BalanceCheck prompts automatically for validation with external weights
- proFACT fully automatic time- and / or temperature-controlled internal adjustment and linearization
- Built-in RS232 interface and two auxiliary outlets
- Slot for second interface (7 options), incl. Bluetooth and Ethernet
- Terminal can be placed away from the balance
- Protective cover for the terminal
- Production certificate



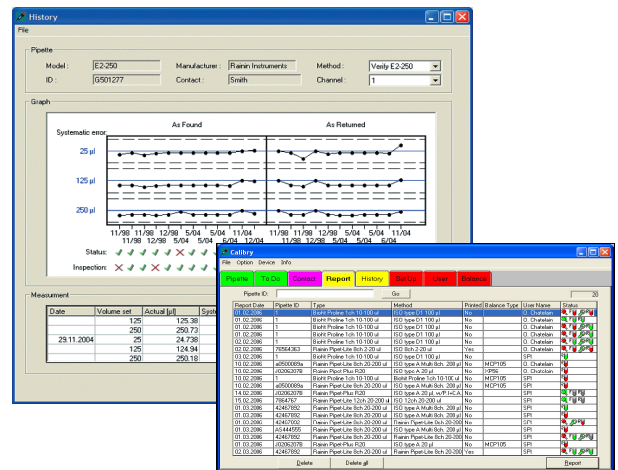
Optimal stability for fast results

The XP26PC is in perfect harmony with the vibration-free weighing table. The balance is isolated from the working table, therefore environmental influences are eliminated. This speeds up all your measurements substantially. With this complete solution your pipette calibrations become faster than ever before.

Calibration Software

The optional, universal pipette calibration software is optimized for METTLER TOLEDO pipette calibration balances (MCP and XP26PC). It automates the handling of the XP26PC almost completely and therefore enables easy, fast and extremely cost efficient monitoring of single- and multi-channel pipettes according to ISO8655, manufacturer tolerances or customer SOPs.

The software guides you step by step through the calibration process and shows immediately whether the measured values are within the tolerances. Seamless documentation is guaranteed and ultimately a qualified report is printed.



XP26PC Pipette calibration system

Balance Model	Order Number
XP26PC (incl. calibration kit)	11106021
Weighing table for XP26PC	11138041

Specifications	XP26PC
Maximum capacity	22 g
Readability	0.001 mg
Measurement standard uncertainty	0.0015 mg
Minimum measuring volume (acc. to ISO8655)	1 µl
Container volume	10 ml
Evaporation trap	built in
Settling time	3.5 s
Dimensions (l x w x h)	487 x 263 x 296 mm
Weight	11 kg

Accessories	Order Number
Calibry Light	11138423
Calibry Software	11138419
Calibry Software (Network compatible version)	11138420
ErgoSens external sensor for hands-free operation	11132601
Foot-operated switch for balance functions	11106741
RS232C (interface)	11132500
Bluetooth BTS single-point (interface)	11132535
Bluetooth BT multi-point (interface)	11132530
Ethernet (interface)	11132515
PS2 keyboard connection (interface)	11132520
LocalCAN (interface)	11132505
Terminal extension cable 4.5 m	11600517
RS9-RS9 (m/f) cable, 1 m	11101051
LC-RS9 cable for LocalCAN	229065
USB-232 converter cable	11103691



Quality certificate ISO9001
 Environment certificate ISO14001
 Internet: <http://www.mt.com>
 Worldwide service

Subject to technical changes
 ©09/2006 Mettler-Toledo AG
 Printed in Switzerland 11795762

www.mt.com/pipcal

For more information