

**Solutions**

for optimising your processes

for increasing product safety

for protecting your brand reputation

for enhancing security level



Checkweighing solutions to increase productivity
in the pharmaceutical industry

Increase your production line efficiency and protect your brand reputation

with METTLER TOLEDO Garvens checkweighing solutions

Where space in production lines is precious and routine processes such as changeover to another product clearly need simplification, Garvens combination inspection, marking and vision solutions are the key to success. Moreover decades of expertise in pharmaceutical production lines and close co-operation with industry leaders have enabled Garvens to develop safety features and add-ons such as the proven "user management with profiles", local audit trail software and a Domain LogIn Server – for enhanced security in pharmaceutical production lines.

Our project specialists ensure that integration of Garvens solutions is perfect both mechanically and electrically with reliable and secure transport of your packages and

powerful connectivity with your plant management system. Our solutions help you achieve maximum reliability, optimal process efficiency and a high return on investment while delivering safe products for your customers.

Specification and requirement analyses are where our Project Management excels. They work side-by-side with our Research and Development team to make Garvens an expert not only in custom solutions but also in compact, space saving, and pre-engineered "combination systems".

An expert in integration of different technologies, Garvens devise solutions for product serialisation based on a checkweigher and a marking and verification unit – with

your trusted partners for ink jet printers or laser marker and verification cameras. Where weighing is not needed, a compact "mark and verify" system is the solution for use in track and trace applications as well as e-pedigree programs.

Nobody knows our equipment better than we do. An intimate knowledge of our equipment enables us to offer the very best installation and qualification service.



The Equipment Qualification (EQ) challenge

Rather than tying up your own resources or hiring a third-party consultant, let METTLER TOLEDO simplify the process by supplying



qualification services to accompany the precision solutions for which we have already earned your trust. Our comprehensive equipment qualification offering includes:

- Design Qualification (DQ)
- Installation Qualification (IQ)
- Operational Qualification (OQ)
- Performance Qualification (PQ)
- Maintenance Qualification (MQ)

We provide professional installation, immediate qualification, and the certification you require to document your new equipment installation, ensuring that qualification is completed quickly and thoroughly.



An effective EQ program provides the following benefits:

Compliance Assured – We help ensure compliance during FDA audits by providing standardised protocols, written in accordance with Good Testing Practice and Good Documentation Practice (GDP) guidelines.

Time Savings – Our standard EQ protocols are available at the time of equipment installation, ensuring that qualification is ready to begin immediately. Avoid startup delays associated with generating the documents and performing the qualification.

Cost Savings – Our professional qualification services and ongoing preventive maintenance programs reduce the total cost of ownership of the equipment. Proper validation eliminates the risk of steep fines and other expensive consequences resulting from noncompliance.



"EQ Pac" – your customised documents – from DQ to MQ!

EQ Pac includes supplementary documents for validation of customised, specific equipment. The qualification documents contain checklists for creating IQ/OQ protocols and documentation of all relevant software functions. Following GAMP there are also procedural instructions and test specifications as well as a PQ accuracy test.



Service contracts that go beyond qualification

Supplementing your equipment qualification program with a METTLER TOLEDO standard service contract will ensure continued peak performance of your equipment

investment. Investing in your profitability is part of our success-oriented service approach. We look beyond simply maintaining a piece of equipment by developing business solutions that take into account the impact which the METTLER TOLEDO solution may have on your business goals, such as quality, uptime, safety and accuracy.

Maximise your Uptime – talk to the UPteam

Product Inspection is a world characterised by challenges like speed, throughput and accuracy. To maximise your uptime have these systems managed and serviced by people whose knowledge, speed of response and process awareness is completely focused on turning performance and compliance into continuous productivity improvement: METTLER TOLEDO UPteam Productivity Technicians.



Fraud prevention and complete quality control – XS2 MV

The XS2 MV checkweigher combination weighs with high accuracy, marks cartons and verifies the imprint in a space-saving complete system. You can choose between a laser marker or an inkjet printer and different camera systems. All integrated components, such as the product transfer unit, laser marker or inkjet printer, high-resolution vision system and sorting equipment are perfectly matched.

Beside precisely capturing weights, this complete combination system is a key element in the development of an overall serialisation and track & trace programme to meet legal specifications such as E-pedigree.



Maximum flexibility in serialising products – XMV Mark & Vision

The XMV system minimises the risk of product counterfeiting inherent to the pharmaceutical industry by laying the foundation for tracking and tracing products via serial number. This enables downstream devices and systems to track & trace a package through its custody chain, thus meeting "E-pedigree" and "Track & Trace" requirements. The product codes printed onto the carton by the marking system are verified for accuracy and legibility and serve as a key for legally required quality certificates. Overall project cost is greatly reduced as the XMV unites a marking, visual verification, packaging handling and reject system for non-conforming products in a standardized solution that minimises development, deployment and validation timeline schedules.



Reliable rejection of "unsatisfactory" products using air jets and rejection counter-check for highest safety



Sidegrip conveyors ensure perfect and gentle product handling for optimum marking results



Precision adjustment using numeric indicators for quick and easy adjustment of pass width or height according to package size to speed up product set-up and changeover



100% control of lightweight items at highest accuracy – XS1

Ideal for products with small footprint, fast throughput and high accuracy requirements. The XS1 is a particularly compact "X Series" checkweigher design.

The precision, lightweight conveyors combined with patented METTLER TOLEDO EMFR weighing technology ensure that high weighing accuracy is maintained even when operating at high belt speeds. A vast range of options and add-ons are available such as sidegrip conveyors, product spacing starwheels, rejection countercheck for highest product safety. The XS1 is available with supporting validation documentation to ensure that you get the exact solution for your production line requirements.

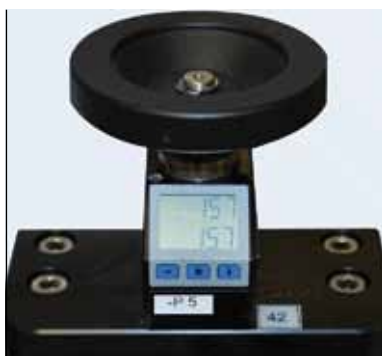


Intelligent design enables tailored solutions – XS2 Pharma

The XS2 checkweigher can be configured with options that pharmaceutical manufacturers benefit from:

- top & bottom conveyors for safe product transfer
- detection of open flaps or askew packs, to protect downstream equipment avoiding unnecessary downtime
- rejection countercheck
- test rejects
- validation package ... and many others

Easy to use touchscreen with modern navigation approach and "user profiles" – for clear operator guidance using screen operator prompts. EMFR weighcell technology gives improved accuracy over long production cycles and fast response for increased throughput.



Position adjustment with digital display for highest possible accuracy and full validation

Maximise equipment uptime – with askew package detection and open flap detection

Packages that are not correctly aligned or askew to the conveyor belt are detected by light barriers and removed into a catch bin, to prevent damage or stoppages to downstream equipment such as bundle packers. A similar monitoring system checks whether flaps of cardboard boxes are closed to prevent content from falling out, which might jam equipment and cause expensive downtime. Both systems contribute to the elimination of problems before they actually occur.



Laboratory accuracy at high throughput
– StarWeigh™ XS

High value products require 100 % inspection. Replicating laboratory results in a production environment is both critical and challenging. The StarWeigh™ XS is the optimum solution: it ensures extremely accurate static weighing at line rates of up to 400 per minute, and integrates automatic calibration tests for continuous verification of system performance. It is ideal for round, oval and even rectangular shaped products and ensures maximum savings when combined with a tare-gross system or feedback to filler control. Simple to install and requiring no line cuts, the StarWeigh™ XS can integrate packaging lines by simply straddling the existing conveyor. Its compact design conserves valuable line space.



Hygiene and speed for your nutraceuticals
– Chain checkweigher

Some nutraceutical lines run extremely fast. Whether you are weighing bottles, cans, or oval packaging you need reliability and accuracy over long production cycles. Our line of high performance can and bottle checkweighers are compact, accurate and easy to clean and maintain. Using our proven chain transport design these checkweighers glide the packages from your conveyors over the weighing section and past the reject mechanisms at high production line speed. Maximum package stability is ensured to eliminate line jams and costly production downtime events. With models that deliver throughput up to 1000 products/minute there is a Garvens chainweigher solution that can meet your demanding application requirements.



Flawless product transport and tracking



"No tools" starwheel changeout

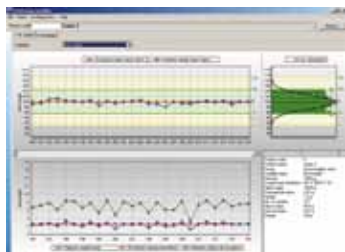


"High performance chain checkweigher" amazing throughput rates – up to 1000 weighings per minute.

Trust Garvens to show you the way to streamlined, more efficient processes

What do blister packs, cartons, pouches, aerosol cans and bottles all have in common?

They are all handled and checked by METTLER TOLEDO Garvens comprehensive range of checkweighers. Enhanced with our user proven software solutions and accessories they are a powerful tool for boosting productivity.



Faster processes with remote access software solutions – don't waste precious time!

METTLER TOLEDO offers Windows® based software programs which enable remote monitoring and control of information captured by Garvens checkweighers. Simply touch a few

buttons on your personal computer or network server for production results and statistical reports, remote printing, administration and maintenance of the product setup data (article data). Product setups and production results are stored in a database allowing for easy management and even quicker product changeover – you can simultaneously changeover the product on several checkweighers in different production lines. Just as easily you can remain informed about your production quality and profitability in real-time thanks to individual production line reports or a merged, total overview.

Regulatory compliance even without a data network – thanks to PrintStick

PrintStick gives you more flexibility:

- Simply save daily reports, statistics or just counter levels on a PrintStick
- Economic storing and processing of weight data on your PC
- Central evaluation of statistics with the user friendly read-out software PrintStick Reader for PC



SQC online recording and evaluation of scales and checkweighers – FreeWeigh.Net®

FreeWeigh.Net® is a powerful Windows based software package for production monitoring and documentation for pre-packaged products and fill processes. All user

input including product changes and batch activities are stored in an event log, so the course of production can be precisely traced back and documented. Production analysis and documentation including graphical reports can be configured by batch, hour, shift, day, week or even year to fit your standard operating procedures.



Data protection made easy – LogIn-Server, Local Audit Trail, Domain-LogIn-Server

Quality and security conscious companies need a

monitoring system creating a personalised, traceable log of when and by whom any particular machine was accessed. The LogIn-Server provides facilities for creating and maintaining a database of those individuals who have access to the checkweighers and for recording log files – complying with 21 CFR part 11.

- The LogIn-Server software provides facilities for centrally creating and maintaining a database of those individuals who have access to the checkweighers and for recording log files of all checkweighers.
- Local Audit Trail – the internal user administration of an X Series checkweigher is used for providing an audit trail i.e. "who changed what when?" record of the checkweigher.
- The Windows Domain-LogIn-Server allows the customer to use all accounts, passwords and rules which are issued and administered by the company's IT department at the network level for the checkweighers, so that users (operators, maintenance personnel, supervisors, quality managers) can use their normal network log-in name and password just as they would with a normal network PC.



Many conditions.



Only one cure.

To maintain your product and brand integrity at optimal health, choose METTLER TOLEDO's product inspection solutions.

METTLER TOLEDO is the leading global supplier of inline checkweighers, serialisation systems, metal detectors and X-ray inspection systems for the pharmaceutical industry.

An expert in integration of product inspection equipment, Garvens can provide space-saving combinations of checkweighers with mark and vision systems, metal detectors or X-ray units which facilitate operation thanks to the shared operating terminal and reduce installation costs and effort in your production line.

www.mt.com/garvens

For more information

Mettler-Toledo Limited

220 Turner Street / PO Box 173
Port Melbourne, 3207, Victoria
Australia

Tel.: +61 3 9644 5700

Fax: +61 3 9645 3935

E-mail: info.mtaus@mt.com

Subject to technical modifications

© Mettler-Toledo Garvens GmbH, 31180 Giesen, Germany

Printed in Germany 0311/150 AU